

[www.rnpgroup.in](http://www.rnpgroup.in)



**RNP SCAFFOLDING & FORMWORK PVT. LTD**

**CORPORATE OFFICE** Address- Plot A 549/550, Mahape MIDC,  
Navi Mumbai 400710, Maharashtra, India  
[info@rnpgroup.in](mailto:info@rnpgroup.in) | [sales@rnpgroup.in](mailto:sales@rnpgroup.in) | [www.rnpgroup.in](http://www.rnpgroup.in)

COMPANY  
PROFILE  
2025



# ABOUT US

Established in the year 1980 our group has legacy of over 40 years. With our clients and partners, we have one goal; to leave a positive, lasting impact on people and our planet. Our commitment towards quality, expectations has enabled us to achieve zero turnaround and helped us towards continuous innovation. Our vision has been to create a platform with epitome of services that puts customer satisfaction as the core of the business. With over four decades of experience in service industry we are now foraying to develop best-in-class warehousing and logistics infrastructure. With dedicated manpower of over 200 nos. the group has well trained qualified team of engineers to deliver unmatched services.

The scaffolding division of RNP group pioneers itself as one of the largest scaffolding service providers in India. It has its manufacturing and stockyard facilities in Mumbai, Pune, Hyderabad and Vishakhapatnam. With Emphasis on safety and quality this division has been providing services to major petrochemical, infrastructure, pharma and defense sector for the last 44 years. The Aluminium Formwork division has provided best in class services for complex design in the infrastructure sector. The Infracon Division of RNP group has been phenomenal in producing Ready Mix Concrete and allied concrete products with supply to many government and semi government organisations.

RNP logistics guarantees a never- before- hassle free logistics experience delivered with perfection through world class services, top line solutions & robust infrastructure. RNP logistics Park offers well designed quality warehouse units equipped with fast access loading docks for trucks & clear open space to eaves. Each unit has its own dedicates loading yard with ramp access for forklift & has ample onsite parking. We operate as an integrated logistics service provider delivering excellent, efficient & effective services.

# ABOUT US



## SUCCESS IS A JOURNEY NOT A DESTINATION

Success is not merely about achieving specific goals but about the continuous improvement of services and customer relationships. Companies should focus on enhancing customer experiences through proactive engagement, understanding client needs, and fostering long-term partnerships. This approach aligns with the idea that success is a dynamic process requiring constant evolution and responsiveness to market changes.

Building strong relationships with clients is crucial. Service-oriented businesses thrive when they prioritize customer satisfaction and trust. A customer success manager, for instance, plays a pivotal role in this journey by ensuring clients feel supported throughout their interactions with the company. This relationship-driven focus can lead to sustained growth and loyalty, reinforcing the notion that success is about the journey of collaboration rather than just reaching a sales target.



# WORK WITH PASSION & PERFECTION



## Vishal Ramesh Patil

Managing Director, RNP Group of Companies  
 Mechanical Engineer (Swinburne University, Melbourne, Australia)  
 23 plus years of experience

Mr. Vishal Patil is the founder of RNP Infracon Pvt. Ltd. And RNP Warehousing and Logistics Park Pvt. Ltd. And serves as Managing Director of RNP Group. He Founded RNP Infracon in the year 2007 and RNP warehousing in the year 2022. He started his career in the RNP Group of Companies which was founded in the year 1980 by his father Shri. Ramesh Narayan Patil. He joined the RNP Group in the year 2001 as Jt.MD., The mother company RNP Scaffolding which was later converted into RNP Scaffolding and Formwork Pvt. Ltd., is mainly involved in manufacturing scaffolding equipments and the company also provides scaffolding services. Since 1980 to 2000 the company was mainly focused in providing services to petrochemical sector but after Mr. Vishal Patil joined the organization in the year 2001 he forayed into infrastructure, elevator, and defense sector. Thereafter he established new branches in Pune, Bangalore, Hyderabad and Vishakhapatnam. With his continuous and tireless efforts he took the scaffolding division to new heights thereby making it the largest scaffolding company in India with total rental stock capacity of more than 50,000 tons of Mild steel. The company provides services to esteemed clientele such as Reliance Industries, TOYO India, HCC, Shapoorji Pallonji, KONE, Toshiba, Schindler, GWS, TATA Projects, LODHA, VOLTAS, Mahindra, Godrej, Indian Navy and more than 600 trusted clients. He has been instrumental in projects across India.

With overwhelming success in Engineering and Scaffolding division Mr. Vishal Patil established new company RNP Infracon in the year 2007. The company is mainly involved in manufacturing of Ready Mix Concrete and other allied concrete products. It has 2 manufacturing units in Navi Mumbai and are providing its services to JNPT, MIDC, NMMC, PMC and CIDCO.

With a vision to expand beyond Engineering, Infrastructure and service sector Mr. Vishal Patil thought of venturing into Warehousing and Logistics sector. Since bhiwandi is termed as the growth center of logistics he started to identify the most suitable site for the growing logistics demand. Being adapted to local conditions land acquisition was not a tough task. The first land parcel of 42.5 acres was acquired in the year 2014. Thereafter within span of 8 years the total land acquisition reached to the level of 238 acres which in itself is a phenomenal landmark considering the location of the site. Now since the acquisition is completed Mr. Vishal Patil has identified AGP Industrial Logistics Park (Assetz Group) headquartered in Singapore as Developmental Manager to develop state of the art Industrial and logistics park. The PMC work is also allotted to them. They will be looking after the upcoming of the entire logistics park. It is been designed and classified as GRADE A logistics park. The total built up area of the park will be 5.6 million sq.ft The development authority is MMRDA and the first phase commencement certificate is expected by end of December 2024 and the construction should start by first week of January 2025.



**2018**  
Best Channel Partner, service provider for PAN India - CCSIPL



**2019**  
Certificate of excellence award for most reputed service provider with PAN India presence from Indian Navy & MDL



**2021**  
Quality Management System -Certificate from DBS CRET



**2021-22**  
Appreciation Award form GST (Govt of India -Ministry of Finance)



**2022**  
Best Service Provider Company of the year TATA Projects Ltd

## VISION

Our vision is to be a global leader in Industry & sector, recognized for our innovative solutions and commitment to sustainability. We aspire to empower individuals and businesses by providing exceptional products and services that enhance quality of life and drive progress. We aspire to foster a culture of excellence and integrity, where creativity and collaboration drive us to exceed expectations. We envision a future where our products & services empower individuals, promote environmental stewardship, and contribute to a thriving economy. Through continuous improvement and a dedication to social responsibility, we aim to inspire positive change and create lasting value for all stakeholders.

## MISSION

Our mission is to deliver high-quality products & services that meet the evolving needs of our customers while fostering a culture of integrity, collaboration, and continuous improvement. We aim to create value for our stakeholders through Customer Focus ,Innovation, Sustainability, Community Engagement. Our mission is to empower individuals and businesses by providing innovative solutions that enhance productivity, foster creativity, and drive sustainable growth. We are committed to delivering exceptional value through our products and services, guided by integrity, collaboration, and a passion for excellence.

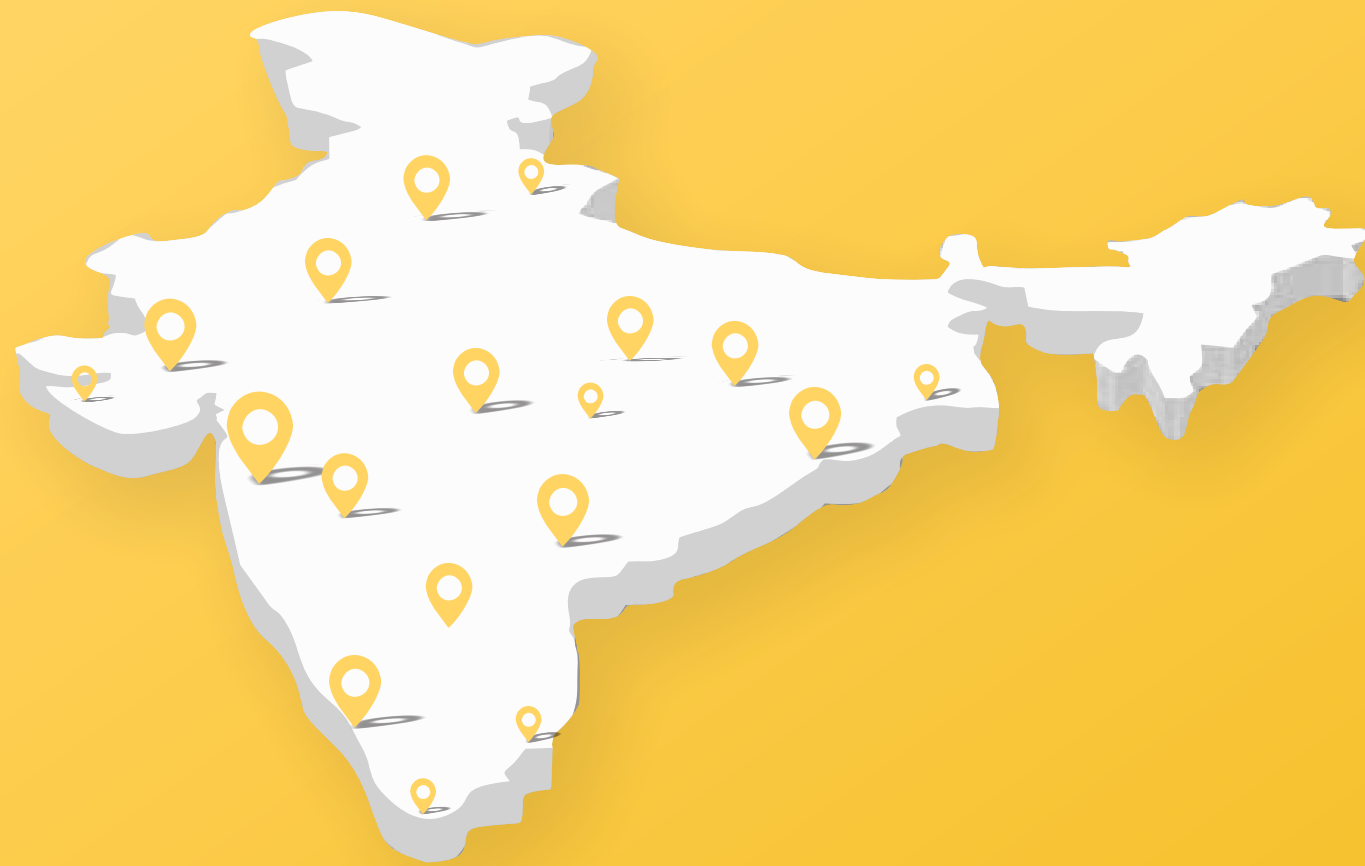
We strive to create a positive impact in the communities we serve, promoting inclusivity and environmental stewardship while continuously evolving to meet the needs of our customers in an ever-changing world. Together, we aim to inspire progress and build a brighter future for all.

 **2000+**  
DELIVERED PROJECT

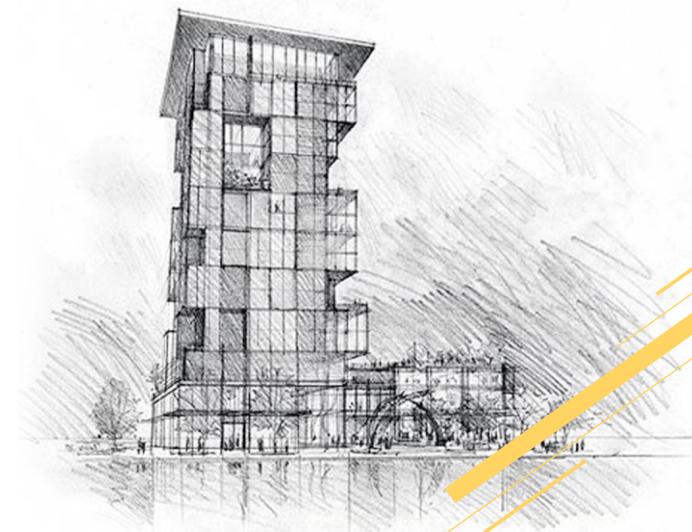
 **Millions** SQ. FT.  
TOTAL WORK DONE

 **20+**  
LOCATIONS

# WE HAVE DELIVERED



IN MORE THAN 20 LOCATIONS



PETROCHEMICAL  
FACADE/ GLASS  
INFRASTRUCTURE  
CONSTRUCTION

PORTS  
OFFSHORE / ONSHORE  
AIRPORTS  
RAILWAY- BULLET TRAIN/ METRO  
DEFENCE – INDIAN NAVY



POWER PLANTS- NUCLEAR,  
THERMAL, SOLAR  
MINING  
CRICKET STADIUMS  
CEMENT COMPANIES

# Rayalaseema Thermal Power Plant

Andhra Pradesh



# EON IT PARK

PUNE- PANCHSHIL REALITY



# D Y PATIL UNIVERSITY

NERUL



# CTRL S DATA CENTRE

Hyderabad



# IGCAR

( Indira Gandhi Centre for Atomic Research )  
Tamil Nadu



**Cipla**

**CIPLA PLANT (GOA)**



# ONGC GREEN

BKC - MUMBAI



# Reliance Corporate Park

Navi MUMBAI



# Pipavav Port

Gujarat



Esteemed Projects



One BKC

Esteemed Projects



JSW CEMENT



Adani  
9 Palm Beach  
Residence



TATA Projects  
Taj Ginger



Lodha Triumph Tower



Toyo Engineering